

APPENDIX A – Sign Types – Illustrative



Figure 1: A-Frame Sign



Figure 2: Animated Sign



Figure 3: Art & Amenities



Figure 4: Awning Sign



Figure 5: Banner Sign



Figure 6: Sponsorship & General Advertising Sign



Figure 7: Blade/Projecting Sign



Figure 8: Directional/Pylon Sign



Figure 9: Canopy Sign



Figure 10: Pylon Sign with Changeable Copy Sign, Manual



Figure 11: Pylon Sign with Changeable Copy Sign, Digital



Figure 12: Flat or Building Sign, Channel Letter Sign



Figure 13: Blade / Projecting Sign



Figure 14: Art, Amenities, Environmental Graphics & Storytelling



Figure 15: Directional Freestanding Sign



Figure 16: Gateway Sign

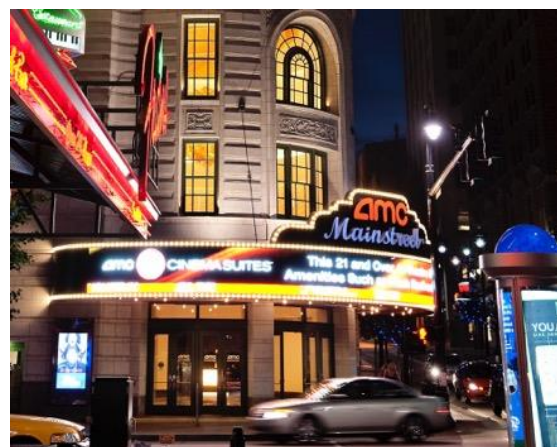


Figure 17: Canopy / Marquee Sign



Figure 18: Monument Sign



Figure 19: Painted Building Sign



Figure 20: Pole Sign



Figure 22: Blade / Projecting Sign



Figure 23: Pylon Sign



Figure 24a: Roof Sign



Figure 24b: Roof Sign



Figure 25: Sponsorship Sign



Figure 26: Window Sign

30'-0"

25'-0"

25'-0"

POWERLINE ROAD

RACE TRACK ROAD

PUBLIX

TOPGOLF

EXTERIOR FRONTAGE ZONE

25'-0" along Powerline Rd,
Racetrack Rd & Railroad Tracks

50'-0" at a Vehicular Entrance to
the Property

300'-0" from South Property Line of the PCD

INTERIOR ZONE

Signs designed to be viewed or legible from a
vehicle or pedestrian from the public rights-of-way
identified on Appendix D will be subject to these sign regulations.

TEMPO

RESORT WAY

N CYPRESS BEND DR

APPENDIX C – District Signage Design – Illustrative



Figure 27: District Pylon Sign

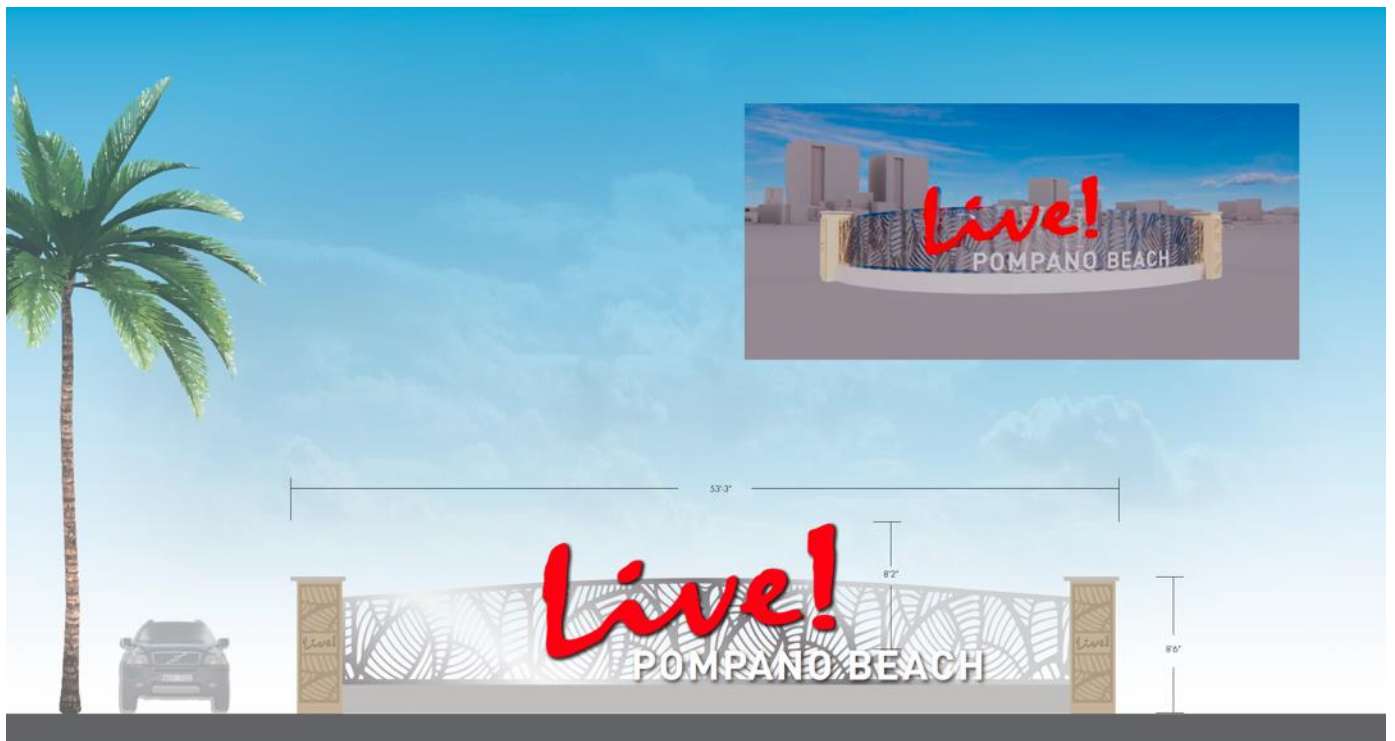


Figure 28: Primary District Monument Sign



Figure 29: Secondary District Monument Sign

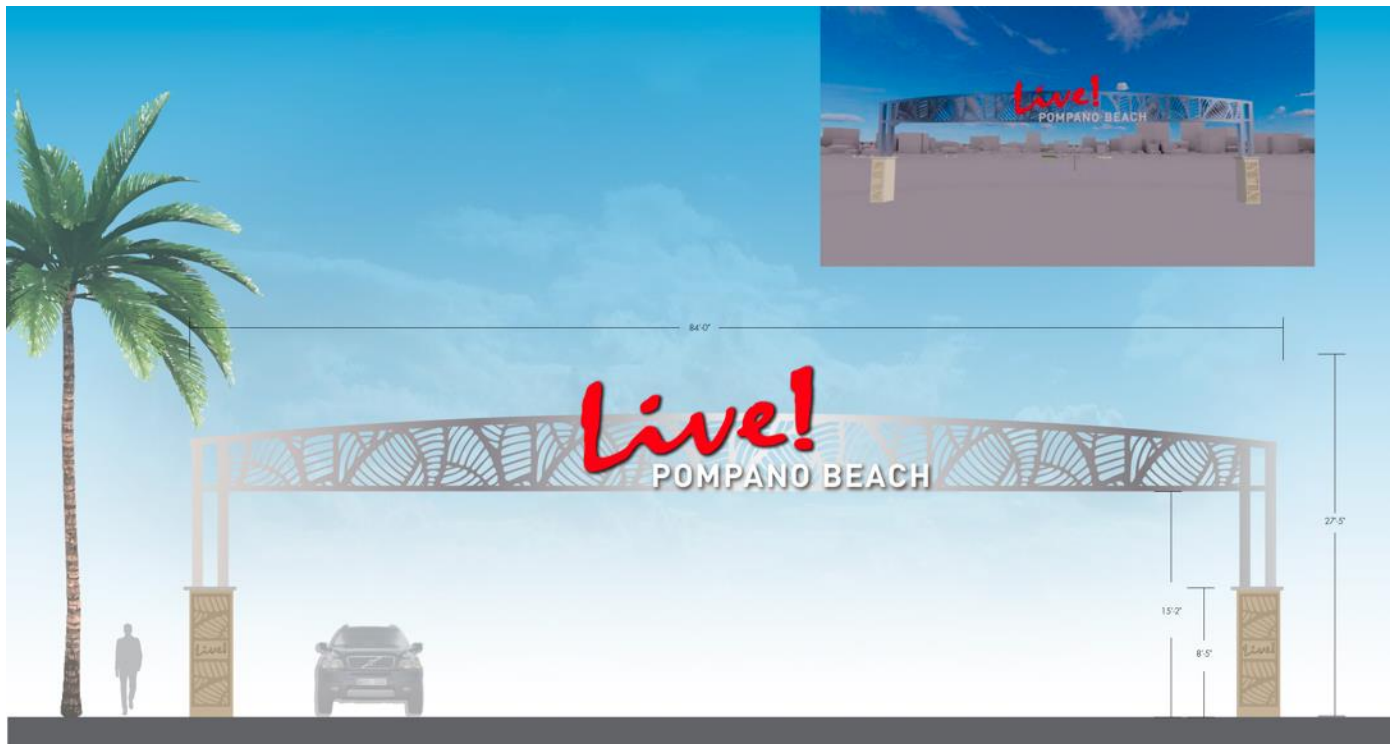
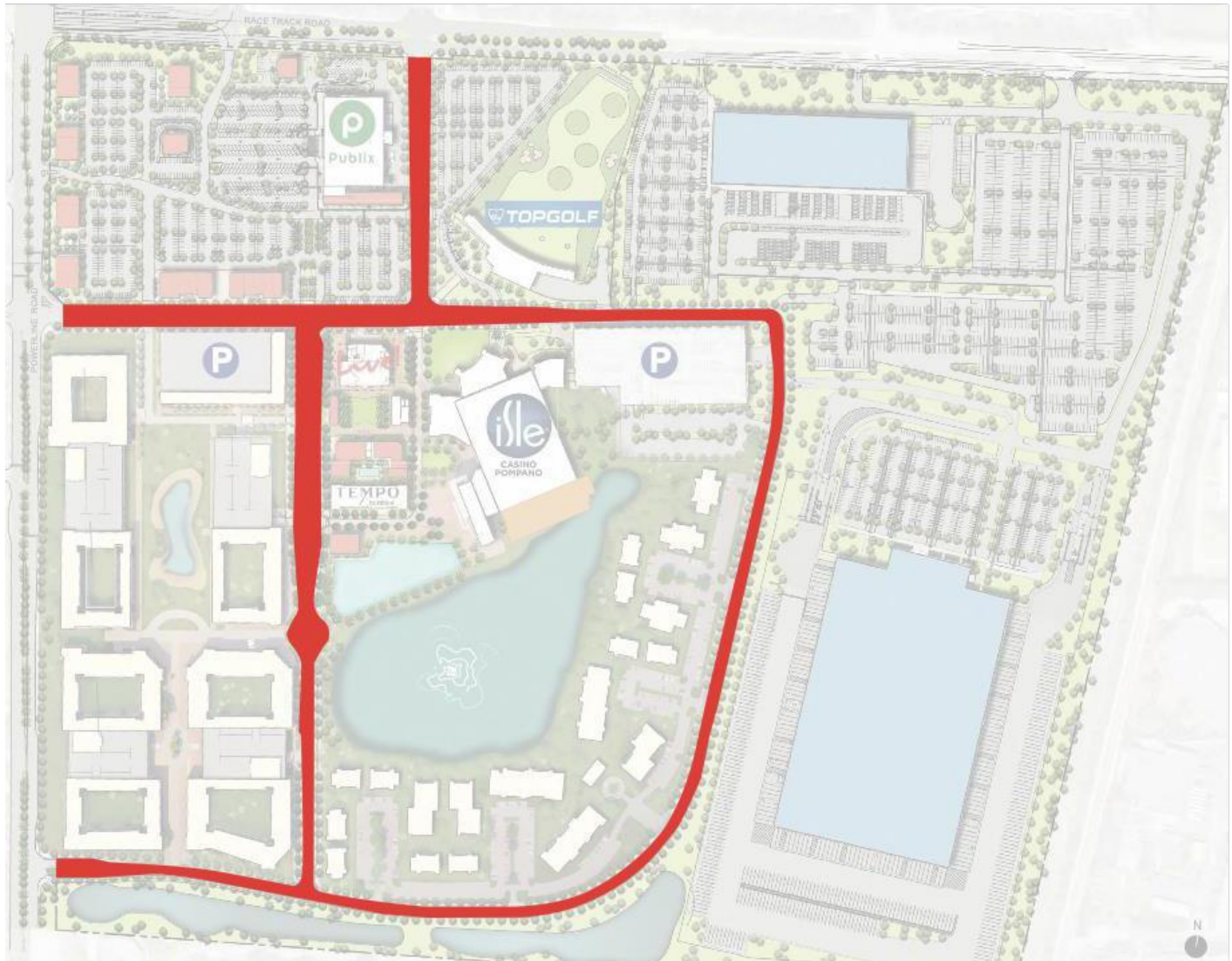


Figure 30: District Gateway Sign



Figure 32: District Direction / Wayfinding

APPENDIX D – Interior Zone Public Rights-of-Way



Roadways identified in red indicate proposed public rights-of-way where these signage regulations will govern signage within the Interior Zone.

P&Z